

ANNAHOLTY BOG:

MARGINAL LANDSCAPE OR MAJOR ROUTEWAY

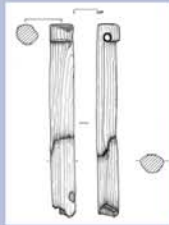
Annaholty/Gooig Bog is a large expanse of deep, impassable and uninhabited bog that spans the boundary between Cos. Limerick and Tipperary. The surrounding landscape is dominated by the Arra and Silvermines-Keeper mountain ranges. This seemingly marginal landscape has proved to be rich in archaeology. In the 1950s a timber trackway and artefacts including a leather shoe were found in this bog.



Aerial view of Annaholty / Gooig bog



E3462 Stake



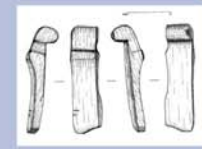
E3530 peg



E3530 Yoke



Aerial view of E3530



E3530 Bucket rim



Recording of E3530



Annaholty trackways

A concentration of stakes was found during monitoring (E3462) of the N7 HQDC and were interpreted as a trackway which collapsed during a bog slide. Annaholty Site 8 (E3530) consisted of a timber trackway or *togher* and was found approx. 200m south of the collapsed trackway. The trackway was constructed of layers of cut timbers and brushwood. Lines of roundwood runners were laid first and then overlain with planks which were held in place by stakes. A foundation layer of offcuts was found on

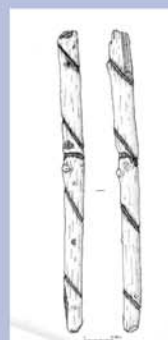


Site location

the softer areas of peat. At 7m wide this is a particularly large example and comparable to the renowned Iron Age *togher* in Corlea, Co. Longford. The trackway extended for 65-70m joining two gravel islands within the bog. The construction methods and finds suggest a medieval date for the site. The large scale of the trackway coupled with the discovery of other tracks through this bog suggests that it formed part of a larger road network across



E3530 planks and runners



Honeysuckle impressed wood



Fierce women!



E3530 Stakes



A leather shoe, found monitoring, is dated to 11/12th century AD and is a composite of cow and deer hide.

this landscape. The trackway itself underlies a modern bog road. Post-medieval and modern bog roads use the dry islands to navigate this bog and it is reasonable to assume these natural routeways have been followed for millennia. Is it a coincidence that medieval artefacts have been found along the River Shannon floodplain between two important medieval towns - Killaloe and Limerick?

Authors: Kate Taylor, Aisling Mulcahy & Edel Ruttle